

CDM Regulations 2015 for Domestic Projects

The new [Construction \(Design and Management\) Regulations 2015](#) (CDM 2015) came into force on 6 April 2015 and include a number of major changes to how they apply on domestic projects. This information sheet is published by Build UK to assist Contractors that work on such projects.

Domestic Projects

CDM 2015 now applies to domestic clients which are people who have construction work carried out on their own home or the home of a family member. If the project is being undertaken on behalf of a business, then they are not considered to be domestic clients. If you are the only or principal contractor on a domestic project, you will be responsible for fulfilling the duties of both the Client and Principal Contractor under CDM 2015.

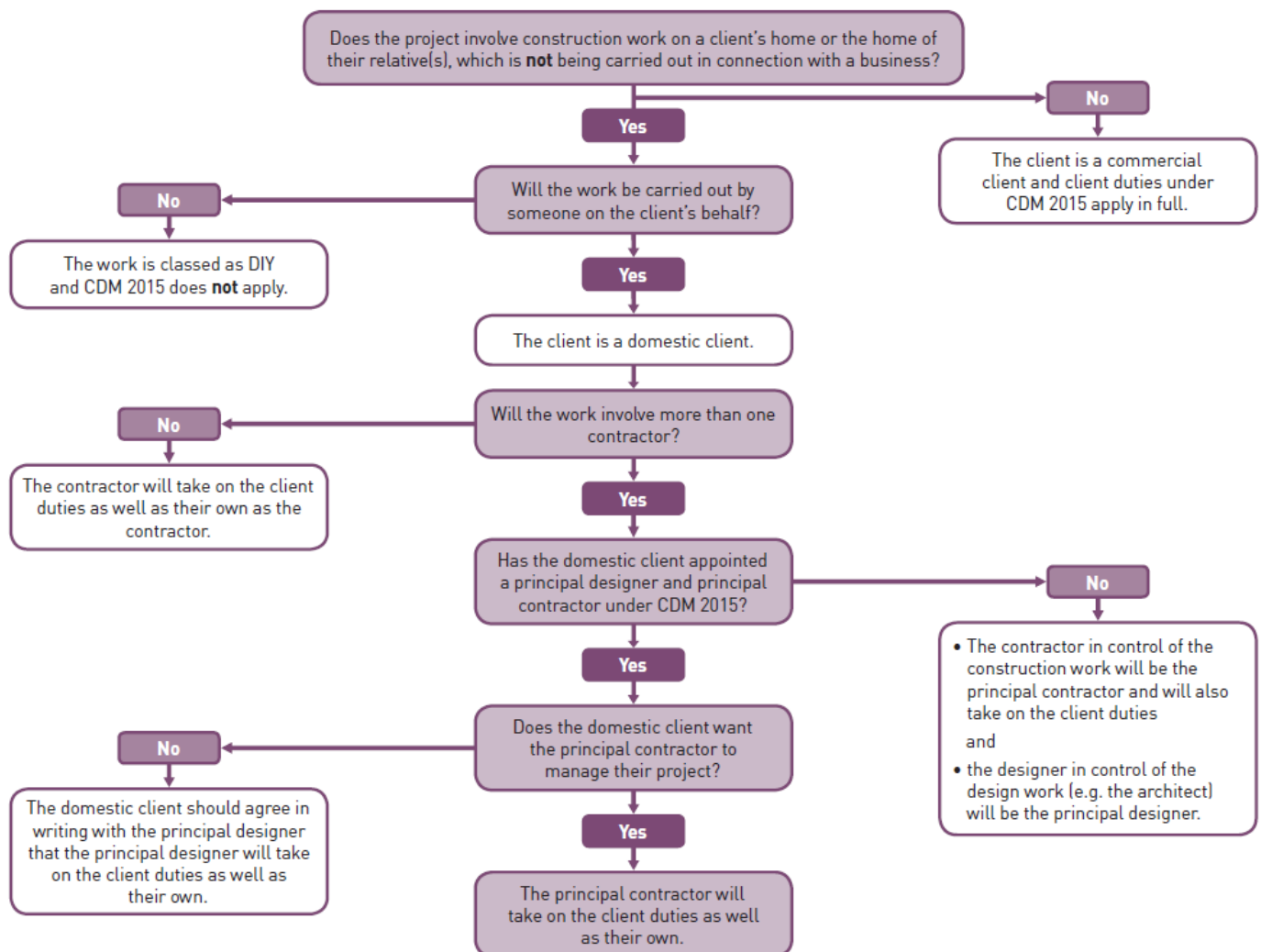


Image Copyright CITB

The Duties of a Domestic Client

Domestic clients have health and safety duties under CDM 2015 which are **automatically** transferred to the only or principal contractor on the project:

- **Notifying HSE of the Project**
Under CDM 2015, HSE must be notified of the project if:

- It will last longer than 30 days **and** involve more than 20 workers at the same time;
or
 - It will exceed more than 500 person days.
- If the project is notifiable, then the HSE must be notified online using the [F-10 form](#).

- **Provision of Welfare Facilities**

The following welfare facilities have to be provided on a domestic project:

- Adequate toilet and washing facilities
- A place for preparing and consuming refreshments
- Somewhere for storing and drying clothing and personal protective equipment.

- **Writing a Construction Phase Plan**

Before the work starts, a construction phase plan **must be written**. This document records how health and safety will be managed for the project and should reflect the complexity of the job – if the job is simple, then keep the plan simple!

To assist contractors in producing a construction phase plan for domestic projects, the HSE, in partnership with CITB, has developed a [smart phone app](#) which will allow you to quickly and easily create a plan by answering a series of questions. The plan can be saved or emailed to others including the client(s) or other contractors. For contractors who do not possess a smart phone or would prefer to write a construction phase plan, HSE has produced a [template document](#) which can be used.

Creating a Construction Health and Safety File

If the project involved more than one contractor, a construction health and safety file has to be produced by the Principal Designer (or Principal Contractor if there is no Principal Designer) and handed over to the domestic client(s) on completion of the project. **If you are the only contractor on a project**, then you do **not** need to produce a construction health and safety file.

The file must contain information about work completed during the project that is likely to be needed to ensure health and safety during any future work, such as maintenance, cleaning, refurbishment or demolition. For example, if a bathroom refurbishment involved more than one contractor (builder, plumber and electrician), then HSE suggests that the health and safety file for this project may include the manufacturer's instructions for a new shower and a sketch of the new bathroom layout.

'As built' drawings or specifications of components that have been installed should also be included. However, the file should **not** include the pre-construction information and planning. HSE has produced [Annex D](#) in their guidance for Principal Contractors with further details.

Further Information

CITB in partnership with CONIAC has produced industry guides which set out what each duty holder under CDM 2015, as well as workers, have to do:

- [Clients](#)
- [Designers](#)
- [Principal Designers](#)
- [Principal Contractors](#)
- [Contractors](#)
- [Workers](#)

For an in-depth legal guide to CDM 2015, HSE has published '[L' series guidance](#) which explains the legal requirements in more detail.

For more information on welfare facilities, see the dedicated section on the [HSE website](#).

Build UK members can receive free advice on CDM 2015 from the Build UK Health and Safety Helpline by calling **0844 249 5351**.